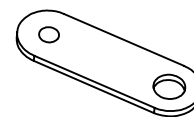


Terra Bolt-Down Instructions

Model Number
C011-043
C011-044

www.norix.com • TEL 800 234-4900



Assembly Notes: Norix is not responsible for any damage due to improper installation. If your shipment does not match the parts list, please contact Norix Customer Service at 800-234-4900. Norix reserves the right to modify design specifications at any time without an obligation to owners of previously sold products.

PARTS LIST				Tools Needed
ITEM	QTY.	PART NUMBER	DESCRIPTION	Low RPM Variable Speed Drill
1	4	011-049	BRACKET PLATE, BOLT DOWN, SHORT, TONIK, PEDESTAL AC LAMP	T-27 Torx® Bit
2	4	021-077	Screw, Machine 1/4"-20 X 1", FH, Pin in Torx® T-27, Zinc	

1. Remove Glides from chair and discard.
2. **Hand-start screws to avoid cross-threading.** Attach Bracket (1) with Screw (2). It is recommended to install a Bracket in each glide location.
3. Place chair in desired location and mark holes for installing floor anchors (not included).

